

## Our Nursery



We pride ourselves on providing high quality childcare in a small and friendly setting. Our intimate environment and the bonds we work hard to build with our parents mean that parents, staff and children all form close relationships.

We strive to provide a happy, friendly and stimulating atmosphere, where children can exceed in their development and reach their full potential in a secure and personal setting. The safety of children and the quality of our childcare are paramount and we continually endeavour to improve our work. Of course, the best possible childcare can only be achieved with the best possible team. All our staff undertake regular training to maintain and improve their childcare skills. Naturally, in addition to holding nationally recognised childcare qualifications, many of our staff hold level 4 or above. Our nursery team are all trained in paediatric first aid and food hygiene as standard.

Unlike many nurseries, we are proud that we have many longstanding members of our team. Their years of experience not only mean that we can provide exceptional care, but the continuity enjoyed by the children helps us to provide them with a stable environment in which they feel happy and safe.

### **Fully registered & rated 'Outstanding' by Ofsted**

- Free settling-in sessions
- Funding available for all children over three
- Funding accepted for children aged two meeting government criteria
- 5 Star Food Hygiene Rating
- Drop-off Zone and pick-up facilities
- Flexible child care options
- French Lessons
- Baby Sign
- Football
- Forest School
- Children accepted from birth
- Individual and personal learning for every child
- Accredited SENCO
- Links with local schools and the community

Close walking distance to the town, train station, park, many schools.



## **Individuality**

Our highly qualified and experienced workforce ensure children enjoy their time at Bright Futures Nursery by forming friendships, building relationships & encouraging learning opportunities such as exploring water, sand, construction, role play, developing sensory experiences and being involved in interactive play both inside and out.

By tracking your child's development and progress, using a child centred approach, your child's key person observes and uses individual plans to provide appropriate next steps for learning. Practitioners are guided by The Early Years Foundation Stage (2012) which supports and embeds practices and experiences provided for your child, ensuring all children are treated and planned for individually.

## **Children's safety is paramount.**

To ensure Bright Futures Nursery is secure at all times we have a key coded system allowing authorised entry only.

All visitors are required to sign a visitor's book and are not left unsupervised.

We operate a password system for the collection and discussion of children

All fire procedures have been met by the Fire department and Health and Safety.

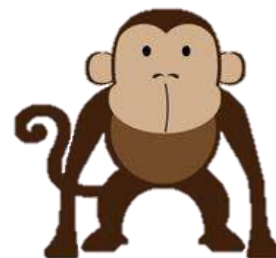
We hold certificates from food hygiene and environmental health.

Practitioners will sign your child in and out from Bright Futures Nursery using the correct times.

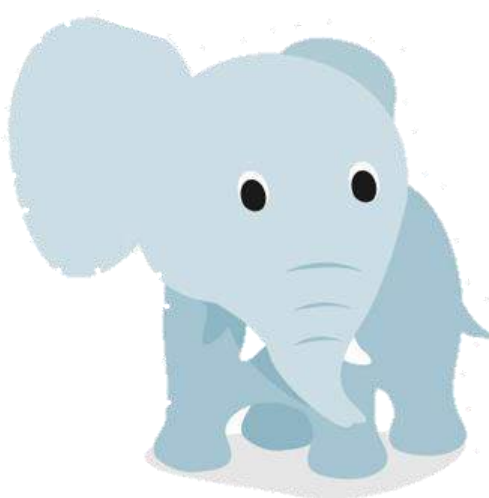
We compile and complete risk assessments daily to assess any risks or hazards.



## Aim



- We strive to ensure that no area of a child's development is neglected and every child leaves us having a happy fulfilling nursery experience, with confidence gained from us whilst they have been in our care.
- To promote equal opportunities regardless of a child's gender, racial origin or social background.
- To make the home to nursery transition a pleasurable experience which not only makes the child feel secure, but will help your child gain natural learning and exciting discoveries which they will continue to make at home.
- To provide a curriculum which caters for each individual's physical, intellectual, language, emotional and social skills, whether they are full or part time, and all children gain full access to activities and play whilst in our care.
- All children's abilities and learning styles are taken into account whilst at nursery.
- To recruit staff that will work as a team that gels, that shares ideas and skills, and that creates a consistent caring atmosphere for the children in our care.



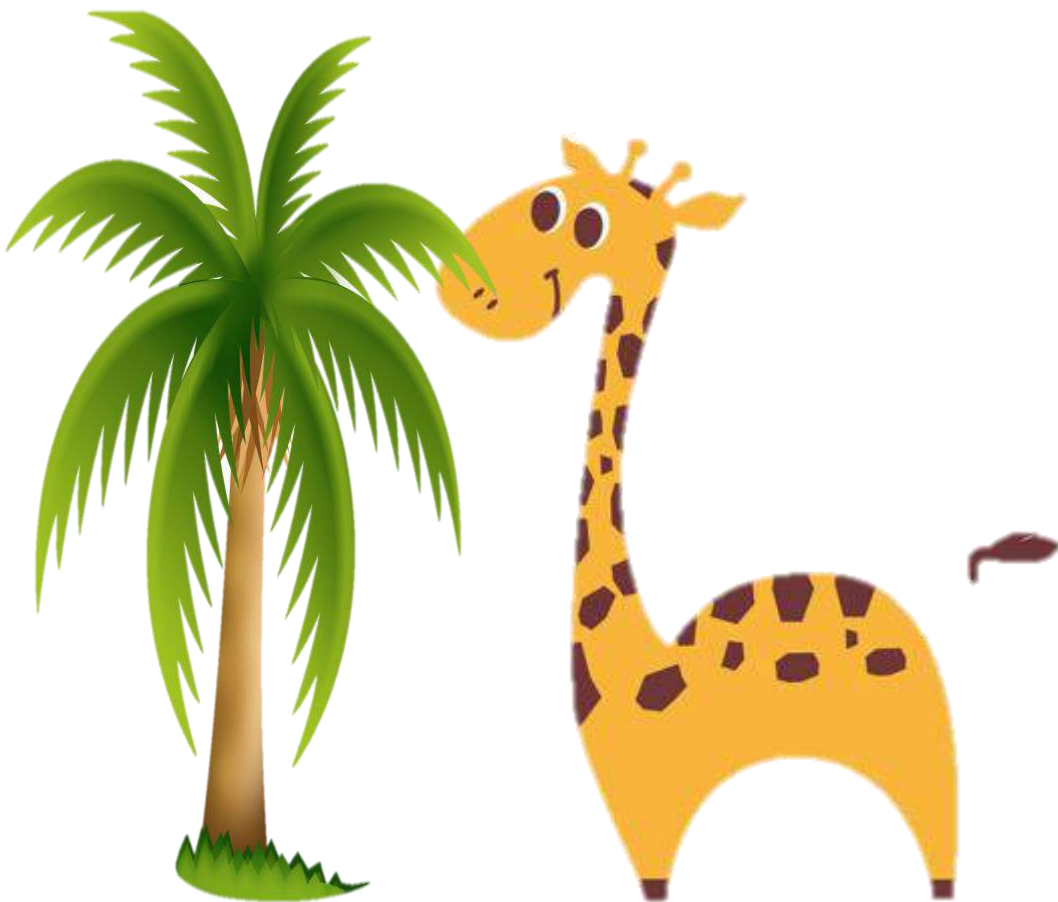
## **Our Mission Statement**

Bright Futures Day Nursery is committed to creating and providing a safe, secure, hygienic and stimulating environment for every child who comes through our door.

Our main priority is the children in our care and their happiness. We would like to ensure you that every effort made by a child whilst in our care is valued.

We make it a priority that both children and their parents/carers can approach any of our staff with confidence at any time, with queries or worries and we view all parents as partners.

Whilst in our care we will ensure that all children have the opportunity to enhance their all round development and knowledge so that they can develop individual skills and gain an appreciation of the world according to their natural abilities and regardless of their ethnic origin, religious beliefs or gender.



## **Parents as Partners**

At Bright Futures Nursery parents need to feel confident and comfortable with the childcare that they choose. To ensure this we operate an 'open door' policy, so that parents can discuss any aspect of their child's care or development at any time with their child's key person or the manager. We recognise that you know your child best, it is important that not only the children but families develop & build a trusting & open relationship with their key person.

We hold regular Parent evenings, provide termly newsletters, have a website, nurserycam, use online learning journeys and also have a parent's notice board in the entrance hall to keep parents up to date. We encourage parents' to attend sessions, take part in events, join in community activities and share their own interests with us.

**Valuing Parents** -We really listen to and value what parents say. We welcome any feedback you can give us to ensure we are continuously striving to improve.

"Bright futures nursery was a clear choice when we viewed all the local nurseries and it's so much better than I thought possible."

Parent July 2012

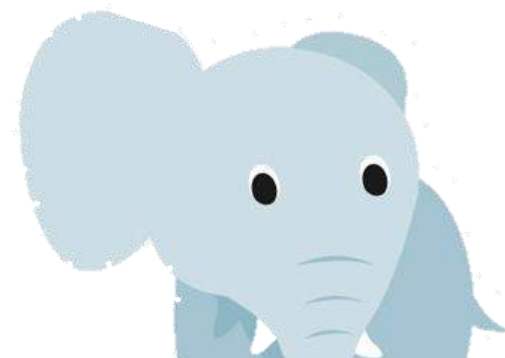
"Bright Futures is an exciting environment full of many learning opportunities for my child. I am always happy with the daily feedback I get and her termly report about her progress. The staff are so friendly and welcoming and I have built great relationships with them. My child is happy and I am happy." Parent July 2019



"I chose Bright Futures Day Nursery due to the natural, homely feel of the environment. My boy's enjoy coming into nursery and tell me all about their day when we get home, especially football Friday. All staff are knowledgeable caring and enthusiastic." Parent August 2019

"A big 'thank you' to the lovely team for helping my little girl settle in. She loves the place and gets so excited anytime we are near." Parent 2013

"Thank you to everyone at Bright Futures you've all done an amazing job in providing my child with the skills she needs for school." Parent September 2018



## **The Team**

Bright Futures Nursery invest highly and value their workforce, we employ highly proactive people committed to the children in their care encouraging them to continually train and update existing knowledge. Our staff are appointed not only on the basis of their high qualifications and experience but also for their personal qualities and ability to interact. Practitioners must strive towards improving outcomes for the children they care for. We look for dedication, kindness, enthusiasm, creativity and for a genuine love of children. All of our staff work together as a supportive mature team creating a happy atmosphere, we are all proud of.

The staff ratio is maintained at all times as recommended by Ofsted.

### **We ensure all staff have.....**

- Live DBS checks (Disclosure Barring Service)
- A full induction programme
- Reliable references
- Safeguarding Children, Health & Safety and Fire training
- Qualified as First Aiders
- Trained in food hygiene
- Individual staff training programme

### **(Please ask for a complete list of expected training requirements)**

All staff meetings and team training is held out of hours so they do not disrupt the nursery's opening hours.

**Key person** - To help settle your child and to create a secure foundation for your child's social and educational development we appoint a member of staff which will be known as your child's key person. The key person has a special responsibility of caring for your child's needs, monitoring your child's progress by observations, planning next steps and feeding activities uniquely for your child into our weekly planning. This is recorded in your child's learning journey. You as a parent can speak to your key person anytime regarding any concerns you may have or for any progress updates. Families are actively invited to contribute to their child's learning journey.

**Early Years Professional Status** – Stephanie Walmsley (Manager) holds her Early Years Professional Status and supports all staff members.

**Training** - Practitioners continually have opportunities to upgrade their child care qualifications and have the opportunity to take up courses relevant to them. There are regular staff supervisions and yearly staff appraisals where targets are set and agreed. Peer observations on all staff take place to ensure that roles and responsibilities are carried out and praise is given effectively. Feedback is always given.



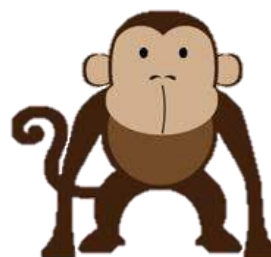


## **Equipment and resources**

Equipment has been carefully selected and maintained with regard to its educational and play value, its safety and durability. Equipment is age and stage appropriate and through using equipment and planning education experiences and activities Bright Futures ensures the breadth of the EYFS curriculum is met.

Independent and child initiated play is encouraged by ensuring all resources can be easily accessed.

We have a lovely play area outside with space for planting and growing, a vegetable patch, digging areas, walk in sand pit, large area for mobility, scooters, and bikes, separate baby garden etc. .



## **Visits, starting and settling in**

Bright Futures Nursery welcomes applications from parents of all children regardless of gender, nationality, colour, religion, culture or disability. Application forms are at the back of this prospectus or can be obtained by telephoning, website download or email request (see the bottom of each page for details)

When you have sent us your fully completed application forms - together with £25 registration fee and read and signed the terms and conditions, it will be acknowledged in writing by post, email or telephone if not discussed when the application has been returned.

Approximately one month before your child is due to start at Bright Futures we will contact you and ask if you would like to arrange settles for us to discuss your child's needs and a chance to get to know their Key person.

You and your family are invited to visit Bright Futures anytime convenient to our nursery routine to observe the nursery in action and to see for yourself the activities, experiences and resources we offer.

## **Meal Times**

Meal and snack times are treated as a social occasion, with practitioners sitting with the children in key person groups.

Eating correctly is educational itself. Our cook provides well balanced and nutritious meals changed every week. You can contribute and receive copies of the weekly menus which introduce the children to a variety of different flavours from around the world. All food intake is logged and displayed for your convenience. Breakfast, milk, snacks, a freshly cooked two course lunch and tea and drinks are available dependant on your chosen sessions. Fresh fruit, vegetables and drinks are also available for children at all times.

Mealtimes are a great opportunity to encourage independence, promote confidence and use self help skills.

Children with their key person help to lay the table and self select their own meals giving them choice and responsibility.

The key person supports positively along side encouraging the children to try new foods and ensuring all meals are balanced.

## **Early Years Foundation Stage**

Bright Futures Nursery uses the Early Years Foundation Stage (EYFS) to plan and build on your child's interests. The document caters from birth to children attending the end of reception at school. September 2012 introduced a revised EYFS This document is a requirement and underpins our working practices displayed at Bright Futures.

**Learning and Development Requirements** - The EYFS learning and development requirements are divided in to two areas. **Prime and Specific.**

### **PRIME AREAS:**

- **Communication and language**
- **Physical development**
- **Personal, social and emotional development**

The Prime areas are key to successful learning and development and children need to be sufficient in these aspects before progressing into specific areas. Prime areas will be included in any planning and experiences you child may get involved with at Bright Futures. Prime areas promote self esteem, confidence and health, proven to strengthen learning for the future.

### **SPECIFIC AREAS:**

- **Literacy**
- **Mathematics**
- **Understanding the world**
- **Expressive arts and design**

Specific areas are planned for at Bright Futures once the Prime areas are embedded. The learning environment at Bright Futures both indoors and out will reflect the Specific areas.

Opportunities for your child to independently explore and discover resources are provided throughout to meet all areas of the curriculum.





**Activities & experiences** - differ according to children's stage of development with play based learning offered to build on previous interests. We consider each child's increasing concentration span and developing skills. Creativity is encouraged by providing different activities for the children to become involved in and ensure that these are rotated regularly to maintain focus. Bright Futures give children every opportunity to develop and experience the best possible start to education thus making the transition from nursery to primary school a smooth one.

**Play** - Play is how children explore and investigate the world, and gradually gain an understanding of it. Our priority is to make learning an enjoyable and stimulating experience, it is vital that practitioners ensure children receive as many chances to learn through play as possible. Children are encouraged to be independent through initiating their own experiences. Children are frequently introduced to pre-writing skills, mathematical concepts and a wide range of physical and sensory activities. They are invited to bring in subject matters from home to encourage group discussion, language and literacy and help support weekly planning.

**Policies** – Bright Futures hold written policies and procedures. These are displayed in our hallway. The staff & parents work together to update policies.

**Inspections** - Copies of our Ofsted inspection can be obtained on request or copies are in the hallway for you to take away. We gained 'Outstanding' in our 2018 inspection.



## **Forest School**

Bright Futures Nursery offers a fantastic opportunity for our pre-school children to attend Forest School sessions and is run by our fully qualified Forest School leader.

Forest School is the name for an approach educating children in the outdoors on a regular basis. This will support the children's next steps and follow the EYFS (Early Years Foundation Stage) and have a strong emphasis on raising all children's wellbeing, self-esteem and independence.

Significantly, and on many levels, a woodland environment is central in supporting this very dynamic approach to learning: the passage of time to the change of seasons, the contemplation of the old trees, and the dynamic nature of the outdoors environment, an infinite source of smells, textures, sounds and tastes, a range of visual stimuli from near too far, high to low, very big to very small. These all offer us a deep relationship with trees and woodland through the ages.

### **Where the children will be going and how do we get there.**

The sessions will take place at Gooseleach woods off Simonstone lane, in Simonstone. The children will be taken there by minibus and will go in a group of eight children with two members of staff. The sessions will be held on Tuesdays and Thursdays with a different group of children attending the different sessions. The children will attend for a minimum of 5 weeks a time depending on the term length.

The site is securely fenced all around the perimeter, it contains a mixture of woodlands and a clearing, it also has a small stream on the perimeter. There is a host of nature that has been seen on site, such as rabbits, squirrels, woodpeckers as well as an abundance of bird's species. It is a 20 minute drive to the woods and then a 15 minute walk on the greenway from Simonstone Lane. The children will wear high-visibility jacket whilst out in the woodland and staff will wear the Nursery colours so children can easily see staff and the staff can easily head count the children.

Examples of the types of structured activities the children will do are:-

- Shelter building
- Natural arts
- Story telling
- Tree and leaf recognition
- Animal tracks
- Crafts
- Bug hunting
- Tree/log climbing
- Natural crowns



When children become more confident in the woods we will introduce:

- Fire lighting
- Cooking
- Safe tool use

## **Standing Orders**

Standing orders can be used to pay weekly or monthly in advance.

A deposit of £25 is required if you wish for Bright Futures to hold a nursery place for you.

## **Discounts**

Funded Early education places are available for qualifying 2, 3 and 4 years olds. 15 hours per week over 38 weeks. Hours flexible to you. Or 30 hours for eligible families. Additional extras for children receiving funding are charged as: £31.25 per month for 30 hour funding and £24.75 per month for children receiving 15 hours funding.

All nursery vouchers are accepted.

For siblings of children already attending Bright Futures we offer a 10% discount for the oldest child.

NHS staff are offered 10 % discount. Identification will be required.

Bright Futures can direct families to relevant support services regarding the working tax credits. You can now claim for up to 80% of your child care costs if you work sixteen hours or more subject to HMRC's terms and conditions.

Discounts are given after all other discounts are deducted from your invoice.

**Notice** - Notification of a child leaving requires a minimum of one month's calendar notice.

